



EFFERTZ®



No water sprinkler
system necessary

Fire resistant curtain Fibreclam® ISO3 T30/EI30



Made from insulated curtain material
Tested according DIN 4102
and DIN EN 1634-1



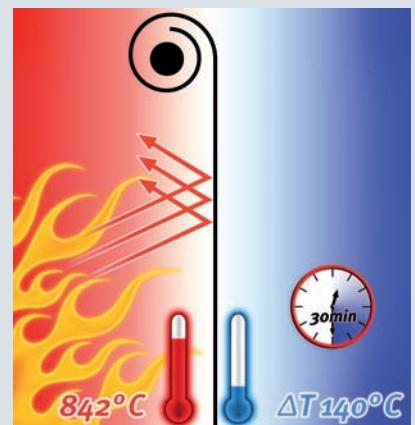
Hospital



Hospital



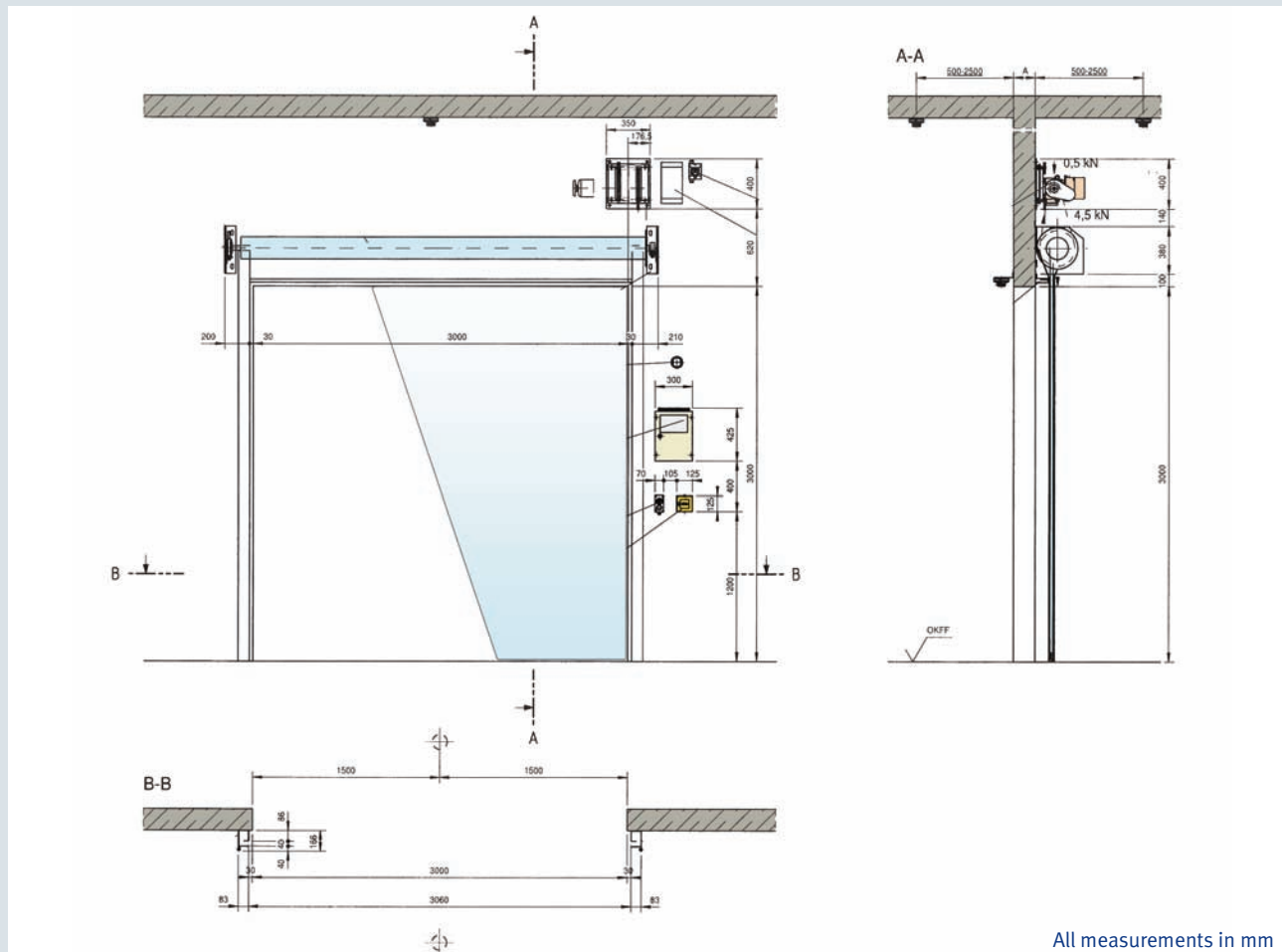
Hospital



Schematic diagram T30 / EI30

Photos may include optional extras.

Fire resistant roller door Fibreflam® ISO3 T30/EI30



All measurements in mm

Smoke Detector

The number of necessary smoke detectors required depends on the width of the opening. For openings of up to 4,000 mm width 1 smoke detector, for up to 8,000 mm 2 smoke detectors per side on both sides of the opening are necessary. For lintels over 1 metre in height, one or more additional smoke detectors must be installed on one side and near the underside of the lintel. The quantity is again depending on the door width; up to 4,000 mm one, up to 8,000 mm two smoke detectors are required. In certain circumstances, smoke detectors may give out false alarms, which is especially so where there is substantial generation of smoke, mist or dust, such as in the vicinity of baking ovens. In such cases we recommend heat detectors which react to increase in temperature. In escape routes, only smoke detectors may be used.

Special note

This fire resistant roller door can be mounted at the following wall types:

- Concrete or armoured concrete C20/25 according DIN 1045-1 (minimum thickness 140 mm) or brickwork (minimum thickness 175 mm) or F90 – cased steel post.

In brickwork through bolts and counter plates are used. Fire resistant roller doors cannot be opened manually; therefore a separate door shall be provided if applicable.



Up to 4m² available with tubular drive, too!

Specifications

Fire resistant roller door curtain type Fibreflam ISO3, fire resistant T30/EI30 accord. DIN 4102, with flexible curtain (insulated fire protection curtain). Approved durability of mechanical performance for 200,000 cycles (C5). VKF-certificate nos. 22487 and 22505.

Textile insulated fire protection closure:

- Insulated curtain, rolling up on winding shaft, made of special fibre with foaming insulation, which allows low-wear and tight winding.
- End strip with integrated contact edge
- Side guides made of galvanized steel panel
- Steel parts galvanized or with one priming coat
- Fire protection drive, connection 3/n/PE ~ 400 V, 50 Hz, with integrated centrifugal brake to limit the closing speed in case of alarm to max. 15cm /s.
- Closing without power by own weight, therefore safe closing even in case of power or control failure ("gravity failsafe")
- Automatic re-connection system for a comfortable reset after an emergency case.
- Release system, approved by the building authorities, with battery supply, which ensures the function of the release system for approx. 2 hours in case of power failure and keeps the door open.
- Optical stray light smoke detector, quantity according to DIBt-rules up to lintel height 1m.
- Siren, which reacts in case of release (accord. DIN EN 12604)
- 1 manual emergency push button in case behind glass, colour of casing: yellow. IP 42 (on the drive side) accord. DIBt-rules.
- 1 key switch (surface mounted model) on the drive side (incl. provisional profile half cylinder).
- Dead man's circuit close, self hold up
- Technical documentation accord. Effertz-standard on CD-ROM.

Effertz Release System

The key control unit in every fire protection roller door is the Effertz release system. Specially-designed electronics make sure that the fire protection curtain is kept in the open position during normal operation, but in case of alarm will close. If a smoke detector is triggered or if the emergency push button is actuated, the power supply to the drive will be interrupted, the brake in the drive released, and the curtain will close by its own weight, controlled by a speed regulator of the drive, independent of any power supply ("gravity failsafe"). The safety contact edge makes possible to stop the automatic closing operation, should the opening be blocked.

If there is a power failure, the function of this safety device is taken over by a 24 V battery. In the door area there is a siren (approx. 100 dB), which reacts in case of alarm. Every Effertz fire-resistant door is equipped with a specifically authorized release system. Besides the quality monitoring of the fire resistant roller door, there will be a special quality monitoring of the release system by the VdS. Effertz fire protection roller doors have both certificates and by this they follow all safety requirements. In case of an ambient temperature below 0°C we recommend to build in a control cabinet heating.



Hospital



Hospital



Industry



Detail